



Seasons

Marshall County Conservation Quarterly Newsletter

Volume 38, Issue 4

Winter 2024



Start Somewhere

By Emily Herring, Director

"The true meaning of life is to plant trees, under whose shade you do not expect to sit."

Nelson Henderson

It was a warm 80-degree day at the end of October when over 50 volunteers and staff gathered to plant trees at Green Castle Recreation Area. This county area has seen its fair share of tree mortality through Emerald Ash Borer and damaging windstorms. Additionally, the lack of trees in the newly developed campground screamed the need to get some trees in the ground.

The goal was to plant 120 trees and shrubs throughout the park, cage them from rubbing bucks, gnawing beavers, and nibbling rabbits, mulch them to help conserve water, and water them in for the long winter months ahead.



The team effort began with the Marshall County Landfill reaching out to county conservation to help fund the project in coordination with the state's Environmental Management System. Next, a grant was written through the Iowa DNR Community Forestry Grant Program to finalize the project's funding. Consumers Energy predrilled all the holes in advance, saving volunteers significant sweat equity and their backs! Staff and volunteers from Emerson, Trees Forever,



Friends of Marshall County Conservation, Iowa DNR Forestry, Ellsworth Community College, Marshall County Landfill, Students from Marshalltown XLP Junior Conservationists, and

Marshall County staff worked to plant, cage, mulch, and water the trees. It was hard work, with ground that had not seen water in weeks and the balmy October weather, but everyone worked together to accomplish a task. A task that even the youngest volunteers will not see to maturity. Maybe this thought passed through the volunteers' minds, but not a single hardworking person that day stated the fact.



Giving to conservation efforts is not usually instant gratification; it is giving to future generations. Trees take decades to mature. Prairies take centuries to create new topsoil. Educating hundreds of students may lead to one more future defender of wilderness. To make a difference, you must start somewhere!

Marshall County Conservation planted over 3,000 trees and shrubs over the last few years; it is starting somewhere. A group of passionate individuals and organizations is restoring Mann Wetlands Wildlife Management Area, close to 200 acres of wetlands; it is starting somewhere. Hosting programs and events that reached over 5,000 people in the last year: it is starting somewhere. Recruiting volunteers to donate over 3,000 hours of their time: it is starting somewhere.

The basic fact is that we are just a blip on this big blue and green planet timeline. The record of how we treat our earth will remain long after we are gone. And I don't know about you, but I want that record to show that we did everything possible to protect it. I guess I may be preaching to the choir to many of you. But even those who have done their best to care for the world we live in can use the reminder that we are not doing this for ourselves. We are doing it for the future of the planet and future generations, not for ourselves. I always tell my children, "Leave it better than you found it." In some cases, it may take a century or two, but man, that is something we should be proud of.



A SCARY SUCCESS!!!

We want to thank all of our supporters for the 2024 Park Apocalypse. Without your support, the event would not have been possible. Thank you!

DONORS

**Mitchell Family Funeral Home
Friends of Marshall County Conservation
Marshalltown Community Theatre
Appleberry Farm
Marshalltown Fareway Store
Alta Vista Real Estate**

Bill Carey, Allison Walters, Kager Kremer, Vanessa Engel, Lydia Lillibridge, Lisa Naig, Theresa Walton, Kandy Wittry-Kern, Katie Fink, Case Heggeman, CERT, Jim Clark, Hunter Dawson, Chad Pietig, Julie Stahl, Sam Dean, Bethany Currie, Hobz Hooley, Jaime Hooley, Nina Herring, Leo Herring, Joe Herring, Ryker Reynolds, Tara Harding, Ben Quigley, Tigh Faris, Nacole Brown, Lillyn Eichhorn, Olivia Wise, Elena Wise, Marvis Drew, Joyce Christensen, Joan Studts, Deb Kerr, Barb Lageschulte. Jeff Kooser, Lucas Bantz, Myles Goodman, Ruben Fuentes, Thomas Stanley, Carter Bell, Carter Nunn, Abbie Colwell, Millie Heitmann, Elzya Ceren, Carson Wright, Mattea Wright, Sophie Valdez-Chavez, Lilyia Christen, Edson Gallentine, Colby Cross, Parker Gooding, April Denton, Shawn Denton, Aubrey Denton, Krystal McConnell, Seamus McConnell, Cyrus McConnell, Lana Bradstream, Brandon Runkel, Preston Johnson, Matthew Ramirez, Piper Pietig, Lily Marquess, James Marquess, and Ann Marie Phkhaladze.
Our apologies if we inadvertently missed someone.

VOLUNTEERS

Trees to Table Pancake Feed

Saturday, March 1, 2025

7:00 - 10:00 a.m.

Grimes Farm & Conservation Center

Join Marshall County Conservation as we celebrate maple sugaring season with a pancake fundraiser. Come to learn about the making of syrup and enjoy a stack of flapjacks topped with real maple syrup. From trees at Grammer Grove to the tables of the Conservation Center, this sweet treat cannot be beaten. Ticket includes: Three pancakes, two sausage links, locally harvested maple syrup, and a drink.

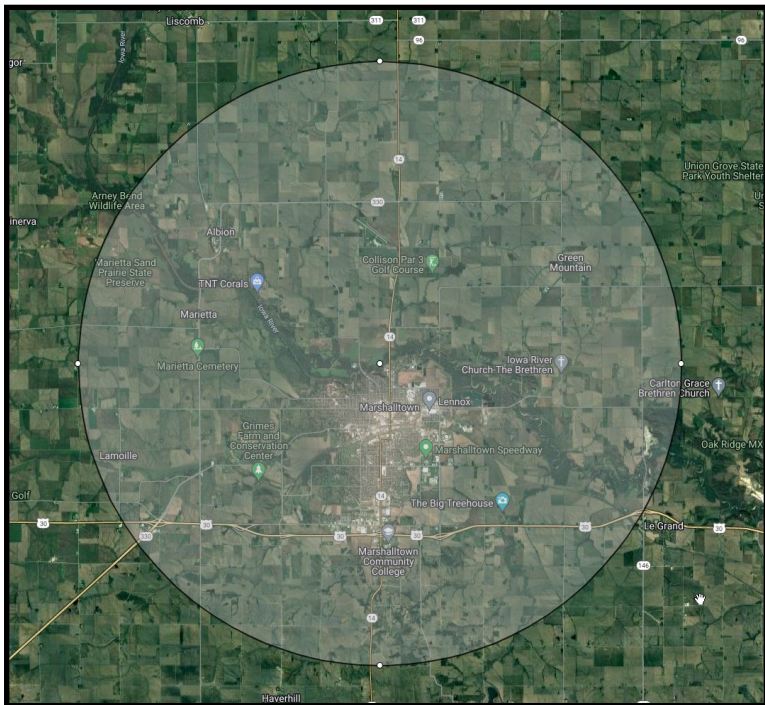
Tickets can be purchased at the Grimes Farm and Conservation Center \$6.00 in advance or \$7.00 at the door. Any questions, please call (641) 752-5490



Christmas Bird Count

Thursday, December 19 All Day
Throughout Marshall County Christmas Bird Area
(See Below Image)
Registration Fee: FREE
Deadline: December 16 by 4:00 p.m.

For 125 years, the Audubon Society has held Christmas Bird Counts across the United States. Data gathered from these counts are used to understand bird populations. During the Christmas Bird Count, groups are assigned an area that covers a 15-mile radius - the group records as many different birds as possible. The species and numbers are then compiled, sent to the Audubon Society, and documented. The count must happen around Christmas, and groups must pick a specific day for 24 hours to record birds. The date we have selected is December 19. We have multiple bird experts and have divided the quadrant into sections. There are a few ways to join and volunteer for birding for a day. 1. If you are an expert, you can help lead a group. 2. Even if you don't know birds, you can join an expert and learn your birds along the way. 3. If you have bird feeders at your home, you can watch and record the birds that come to your feeders. You do not have to dedicate 24 hours. You can give as much time as you want. **If you are interested in joining us for the bird count on December 19, please contact Emily Herring at 641-752-5490 or eherring@marshallcountytia.gov by December 16 at 4:00 p.m.** The map below shows you the regions we will be covering. This includes the towns of Marshalltown, Albion, Green Mountain, and Laurel.



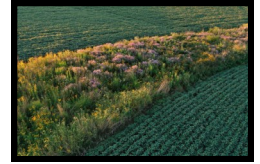
Brown Bag Bunch

To register, please call 641-752-5490, text only to 641-758-9777, or email mccb@marshallcountytia.gov by the deadline listed on the event.

December: Sustaining Iowa's Future with Innovative Land Management Practices

Monday, December 9 at 11:30 a.m. - 12:30 p.m.
Grimes Farm and Conservation Center
Registration Fee: FREE
Registration Deadline: December 5 by 4:00 p.m.

Ann Staudt, Iowa State University, will dive into the science of in-field and edge-of-field conservation practices for Iowa, which are crucial to supporting water quality and long-term sustainable agricultural production and adding beauty to Iowa's landscape. Staudt is an environmental engineer who actively blends scientific knowledge and creative expression through water-focused extension work and teaching, from high-impact presentations with youth, to farmer field days, teacher training workshops, and the fleet of four Conservation Station trailers.



January: Iowa Wildlife Oddities

Tuesday, January 7 at 11:30 a.m. - 12:30 p.m.
Grimes Farm and Conservation Center
Registration Fee: FREE
Registration Deadline: January 3 by 4:00 p.m.

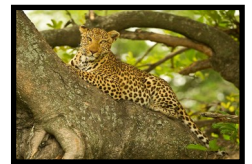
Join Jim Coffey, Iowa DNR Biologist, to learn about Iowa's wildlife oddities. The State of Iowa sometimes gets odd visitors to the state, anything from moose and albino deer to armadillos and everything in between! Discover why and how these animals end up in the state.



February: African Safari- The Best of Africa

Monday, February 10 at 11:30 a.m. - 12:30 p.m.
Grimes Farm and Conservation Center
Registration Fee: FREE
Registration Deadline: February 6 by 4:00 p.m.

This presentation includes many striking and intimate images of Africa, including photos of birds and mammals with young, catching prey, and interacting in fascinating ways. Ty Smedes will bring viewers along on an African safari. You will learn about African wildlife and hear some incredible first-hand stories. Charismatic animals include lion, leopard, cape buffalo, hippo, African wild cat, and the rare and elusive wild dog. The African birds are fantastic and very viewable, and many images were captured by photographing from boats plying the Chobe River and along the winding channels of Botswana's famed Okavango Delta. We'll also visit Kenya, Tanzania, Uganda, and Zambia. If you've ever wondered what an African safari is like, come loaded with questions for an experienced African traveler who has led eight safaris to the dark continent.



Nature Adventures

Join us at the Grimes Farm and Conservation Center for a nature program delivered in a flexible format specially designed for kindergarten through fourth-grade students. Programs will engage students with a story, craft, or activity and an outdoor fun component. There is no fee for this program. To register for Nature Adventures, please call 641-752-5490, email mccb@marshallcountya.gov, or text only 641-758-9777 by the registration deadline.

December: Mammals

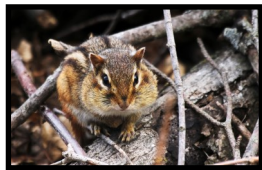
Thursday, December 12 at 10:00 - 11:00 a.m.

Grimes Farm and Conservation Center

Registration Fee: Free

Registration Deadline: December 10 by 4:00 p.m.

What is a mammal? Join us to learn more about Iowa's mammals and discover what makes them unique.



January: Geology

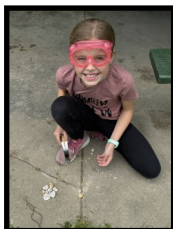
Thursday, January 16 at 10:00 - 11:00 a.m.

Grimes Farm and Conservation Center

Registration Fee: Free

Registration Deadline: January 14 by 4:00 p.m.

Discover how rocks can be exciting! Students will learn how rocks are formed in hands-on activities.



February: Bison

Thursday, February 6 at 10:00 - 11:00 a.m.

Grimes Farm and Conservation Center

Registration Fee: Free

Registration Deadline: February 4th by 4:00 p.m.

Join us at the Grimes Farm to learn about the ecological and cultural importance of bison. We will interact with amazing furs, skulls and so much more.



Sock Gnomes

Thursday, December 5 at 6:00 - 7:30 p.m.

Grimes Farm and Conservation Center

Registration Fee: \$15.00

Deadline: December 2 by 4:00 p.m.

Get ready for the holiday season by creating a sock gnome. Participants will learn how to make a gnome using a non-sewing method using a sock. Hot glue guns will be used, so children must be accompanied by an adult. All supplies will be provided. **Participants must pre-register and pay the program fee before December 2. Register by calling 641-752-5490, text only 641-758-9777, or email mccb@marshallcountya.gov.**



Annual Photo Contest

Deadline: January 31 at midnight.

- **All entries must be emailed to mccb@marshallcountya.gov titled Photo Contest by Friday, January 31 at midnight.** In the body of your email, state the category for the photograph(s), your name, address, a brief description of the photo, and phone number. No photos will be accepted in person. Do not compress photos in email.
- Photographs will be judged the week of February 10 for the categories listed below.
- Categories: Scenic (Natural Resources), Native Wildlife, Native Plants, Open Nature, and Outdoor Recreation. Winners of each category will receive a \$25 gift certificate. For more information on the categories, <https://www.marshallcountya.gov/510/Annual-Photo-Contest>
- All photographs received will be posted on Facebook from February 10 through February 16. The photograph that gets the most likes for Peoples' Choice will win a \$25 gift certificate.
- All certificates will be mailed to winners.



Herbal Soap from Scratch

Tuesday, January 28 at 6:30 - 9:00 p.m.

Grimes Farm Conservation Center

Registration Fee: \$35.00

Deadline: January 23 by 4:00 p.m.

Explore the art and science of making handcrafted soap from scratch with Ann Staudt of Siberian Soap Co.! Using the centuries-old cold-process soapmaking technique, students will combine plant-based oils and lye to create soaps that are mild, moisturizing, and eco-friendly. This workshop is very hands-on, with each participant making and taking home 1 pound (4-5 full-size bars) of their own custom batch of herbal handcrafted soap. Long sleeves, long pants, and closed-toe shoes are required of all participants. Please bring an old towel or blanket to insulate your finished soap. Open to age 16+; younger students must have advance permission from the instructor. **Pre-registration and payment of 35.00 are required to secure limited spots by January 23 before 4:00 p.m. Register by calling 641-752-5490, email mccb@marshallcountya.gov, or text only 641-758-9777.**



Pine Needle Basket Weaving Workshop

Saturday, February 8 at 9:00 a.m. - 12:00 p.m.
Grimes Farm Conservation Center
Registration Fee: \$25.00
Deadline: January 31 by 4:00 p.m.



Delayne Segar started weaving pine needle baskets after taking a 3-hour workshop in Fort Dodge. The portability of the craft and the different materials that can be used appealed to her, and she has continued weaving and teaching basket weaving for years. She also paints, her favorite subjects being Iowa Farms and Portraits. Her baskets have won ribbons at Iowa Artists Art Shows and the Iowa State Fair Arts and Crafts and have been sold on Etsy, museum shops, and art stores. Pine needle basketry is an ancient art that has been used for years to construct useful and beautiful items. You will learn the basics of this craft and take a basket home! All materials will be provided. **Pre-registration and payment of \$25.00 are required to secure limited spots by January 31st before 4:00 p.m. Register by calling 641-752-5490, email mccb@marshallcountytia.gov, or text only 641-758-9777.**

Shoes and Soup

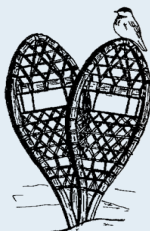
Wednesday, February 12 at 5:30 - 7:30 p.m.
Grimes Farm and Conservation Center
Registration Fee: \$12/person
Deadline: February 7 by 4:00 p.m.



Bundle up and join naturalist Emma Bruck as we brave the cold and spend the evening snowshoeing the trails of Grimes Farm. The full moon will illuminate the winter trails as we explore and take in the peaceful beauty that winter has to offer. The evening will consist of a brief snowshoeing tutorial, followed by time to explore Grimes Farm independently. Complete the evening with a warm bowl of soup at the conservation center. Participants must weigh 40 lbs. or more, and anyone under the age of 18 must have an accompanying adult. Registration fee includes snowshoes, instruction, and soup supper. **Participants must pre-register and pay a \$12.00 registration fee before February 7 at 4:00 p.m. to reserve limited spots. To register, call 641-752-5490, email mccb@marshallcountytia.gov, or text only 641-758-9777.**

Snowshoe Rental

Chase away the winter blues by getting outside! Marshall County Conservation has snowshoes for rent at \$5 a day, plus a \$50 deposit per set. A waiver of liability must be signed. The deposit will be returned when the equipment is returned in good condition within 72 hours. Marshall County Conservation offers many trails where snowshoes are allowed, including: Grimes Farm, Green Castle, Timmons Grove, and Grammer Grove. During Marshall County Conservation-sponsored events, the equipment will be available for use at no charge.



Spring Into Spring Break with Marshall County Conservation

Looking for spring break fun for your kids? Marshall County Conservation is offering three fun environmental education programs: Birding, a Wildlife Hike, and an Animal Meet & Greet. These programs are free, and each session lasts about 30 - 40 minutes. No pre-registration is required.

Birding

Tuesday, March 18 at 10:00 a.m.

Grimes Farm Shelter House

Join MCCB naturalist, Emma Bruck, to learn how to use binoculars, followed by a short birding walk!

Wildlife Walk

Wednesday, March 19 at 10:00 a.m.

Grimes Farm Shelter House

Explore an Iowa woodland with MCCB naturalist, Emma Bruck, and learn what makes this woodland unique.

Animal Meet and Greet

Thursday, March 20 at 10:00 a.m.

Grimes Farm Shelter House

Come and meet MCCB ambassador animals, an Ornate Box Turtle, Tiger Salamander, and Fox Snake!

Acrylic Pour

Tuesday, February 18 6:30 - 8:00 p.m.

Thursday, February 20 6:30 - 8:00 p.m.

Grimes Farm Conservation Center

Registration Fee: \$25.00

Deadline: February 7 by 4:00 p.m.

Whether you want to call it fluid art, liquid art, or acrylic pouring, there's nothing more satisfying than creating abstract masterpieces by letting pigment run amok. We will explore the advanced technique of a scrape with an acrylic pour to create a unique one of a kind piece of art.



There will be two sessions up to 10 participants. **Participants must pre-register and pay \$25.00 registration fee before February 7 at 4:00 p.m. to reserve limited spots. To register call 641-752-5490, email mccb@marshallcountytia.gov or text only 641-758-9777.**

***Our offices will be closed for
Holidays and Trainings:***

***December 24 at Noon, December 25,
January 1, January 20, and February 17***

***If our offices are closed due to inclement
weather, it will be posted on our Facebook page.***

SEASONS

Marshall County Conservation Board
2349 - 233rd Street
Marshalltown, IA 50158
Return Service Requested

NON-PROFIT
U.S.POSTAGE
PAID
Marshalltown, IA
Permit No. 159



Printed on Recycled Paper

Thank you!

Tree Planting

Tony Briggs, Lanny Neuse, Danny Nelson, Tina Nelson, Bob Backes, Marvis Drew, Doni Sheldon, Gary Fulton, Steve Salasek, Jim Clark, Steve Armstrong, Daisy Ambriz, Joe Herring, Ellie Jones, Paul Botch, Barry Gaarder, Jenn Clemann, Lenihan Junior Conservationists, Emerson Staff, Consumers Energy

Donations

Doug Hanken Memorial, Richard Ferhmann, Elizabeth Ledvina, Catherine Stevens, Patricia Bowman, PEO Sisterhood, Dave Perkins, Al & Michelle Illum, Marshall County Landfill

Monarch Tagging

Dena Graff, Jack & Linda Mackin, Jessica Chambers, Mark Happ, Diane Hall

Newsletter Collation

Sharon Depew, Irene & Gary Williams, Dianne Freiboth, Charlotte McGinty, Jack & Linda Mackin, Marvis Drew, Joyce & Rob Christensen, Dianna Mick, Joan Studts

Newsletter Editing

Bren Lee

If we inadvertently missed someone, our thanks to you also.



MARSHALL COUNTY CONSERVATION BOARD

2349 233rd Street, Marshalltown, IA 50158
(641) 752-5490
mccb@marshallcountya.gov
www.marshallcountya.gov

Office Hours

Monday - Friday 8:00 a.m. - 4:00 p.m.

Nature Center Hours

Monday - Friday 8:30 a.m. - 4:00 p.m.

Board Members

Steve Armstrong
Tom Mack
Pam Paone
Rich Naughton
Tom Deimerly

Staff

Emily Herring	Director
Emma Bruck	Naturalist
Jeremiah Manken	Maint. Sup./Park Ranger
Tyler Renze	Natural Resource Manager
Alan Naughton	Conservation Technician
Ben Steinberg	Conservation Technician
Tami Krough	Administrative Assistant